

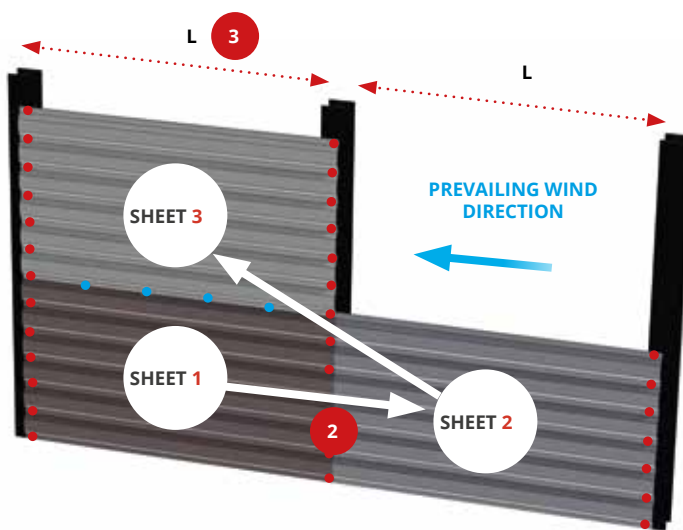
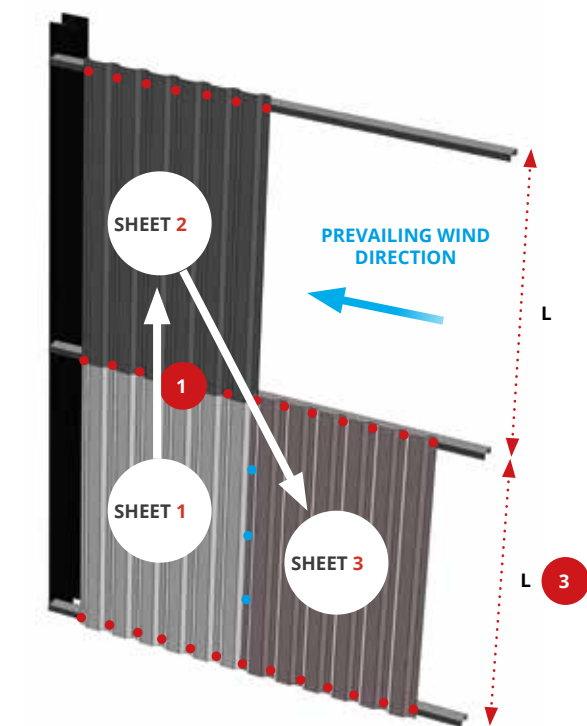
SINGLE SKIN CLADDING

Cladding is used to cover the exterior walls of a building. It fulfils a decorative function as well as providing protection. Before installing the cladding, it is essential to check the alignment of the bearing structure in order to ensure the aesthetic appearance of the façade.

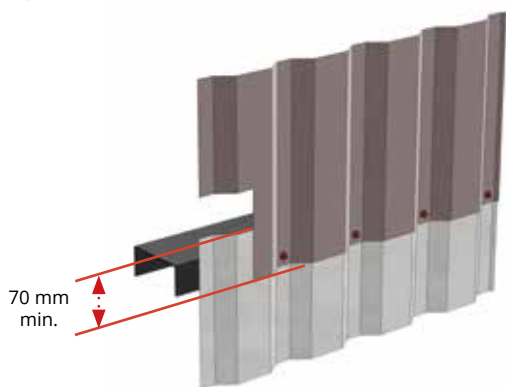
The installation principles outlined above meet the RAGE recommendations for metal cladding*

*Professional rules for the manufacture and installation of metal cladding (RAGE - Grenelle Environment Regulations)
Set of construction regulations aimed at saving energy in buildings and reducing greenhouse gas emissions.

INSTALLATION INSTRUCTIONS

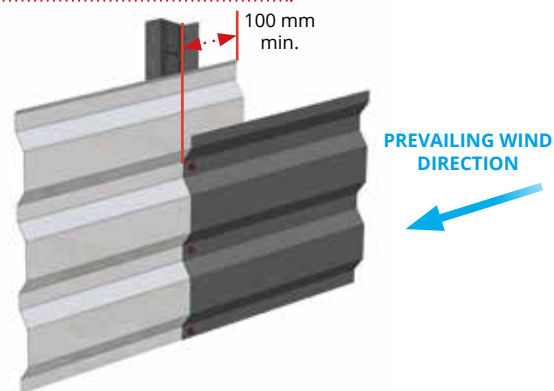


1 VERTICAL INSTALLATION



END LAP OF 70MM MINIMUM

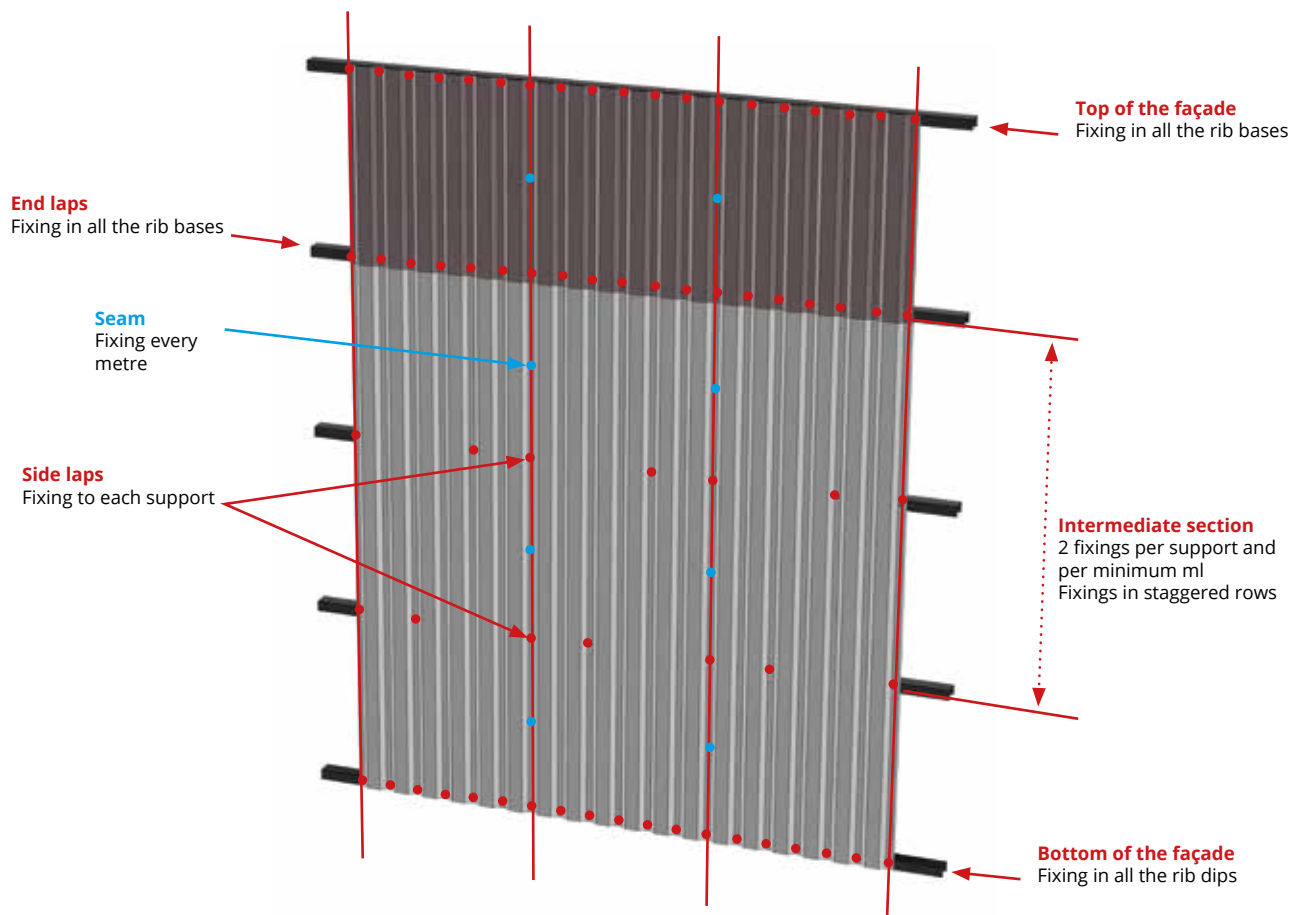
2 HORIZONTAL INSTALLATION



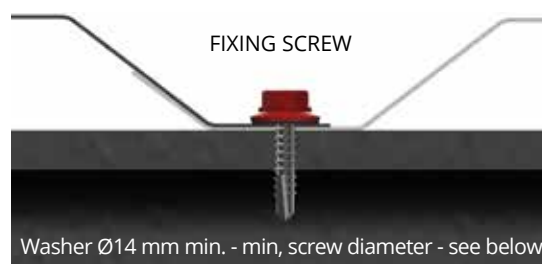
END LAP OF 100MM MINIMUM

- 3 The gaps "L" between supports are determined according to:
- The wind loads to be taken into account (cf "Wind effects" section)
 - Profile performances (cf profile technical data sheet)

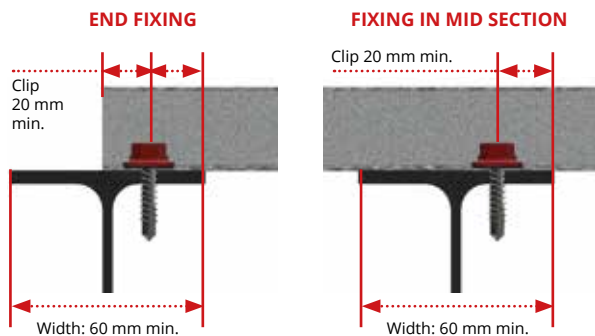
MINIMUM FIXING DENSITY



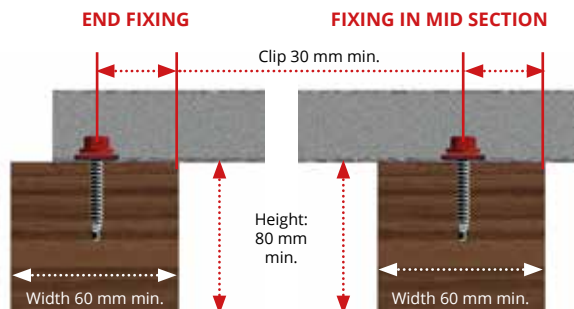
Fixings are placed in the profiling troughs and must respect a minimum diameter.



Fixings should be suitable for the type of supports and fixing densities in relation to the applied wind loads



Fixing on metal support - screw $\varnothing \geq 5.5$ mm

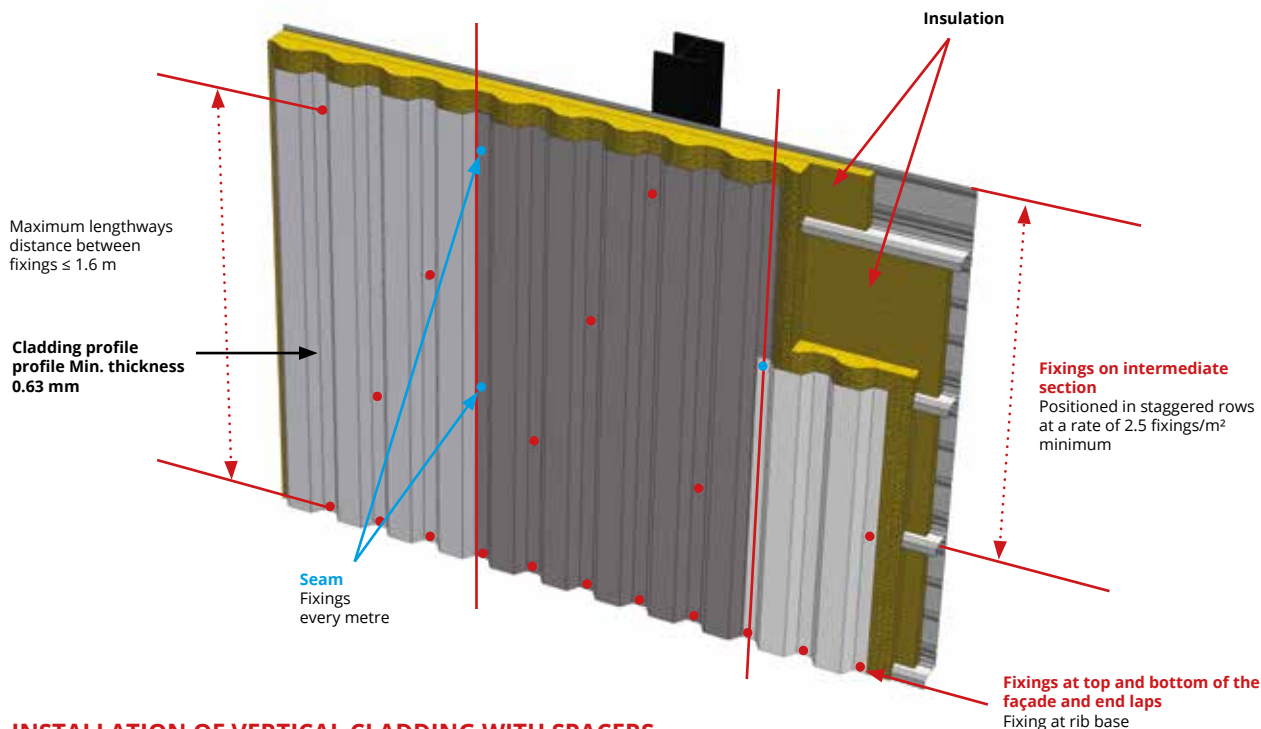


Fixing on wooden support - screw $\varnothing \geq 6.3$ mm
Anchoring in wood 30 mm minimum

TRADITIONAL DOUBLE SKIN CLADDING

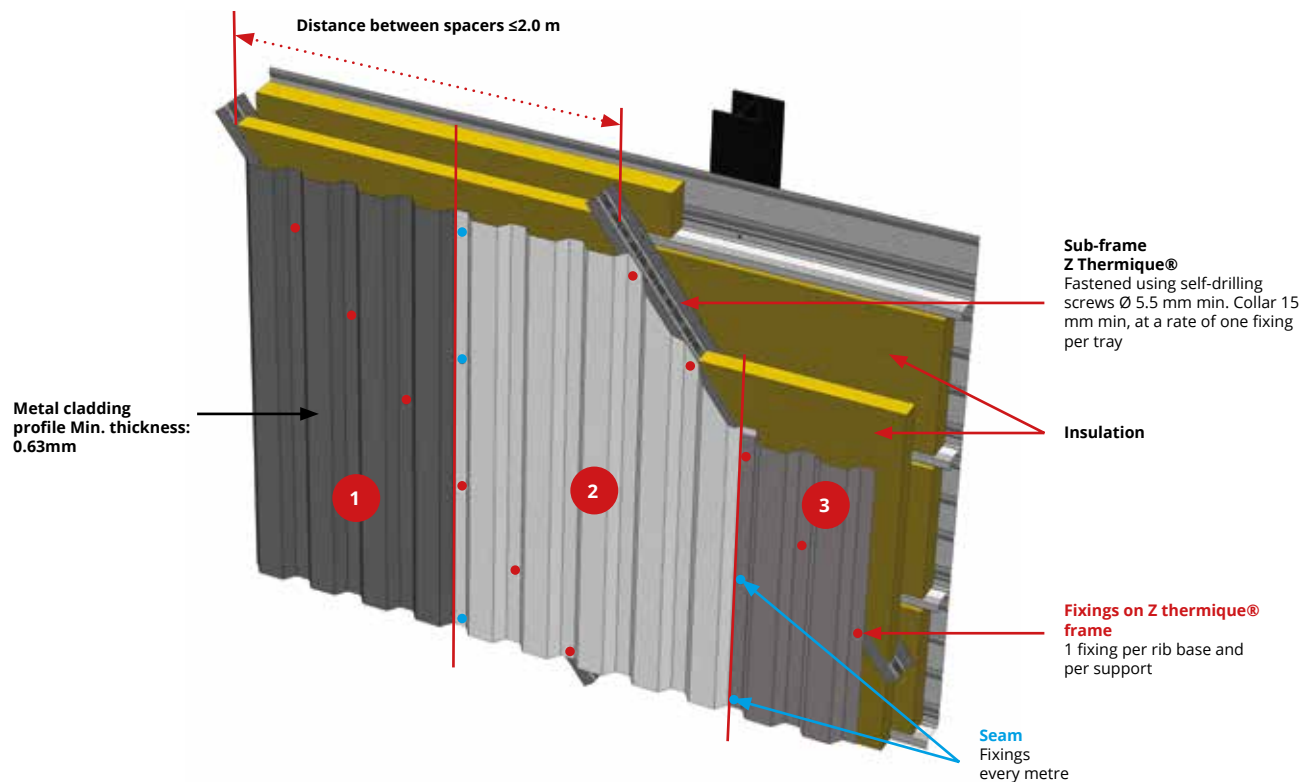
The end laps for cladding fixed onto liner trays are identical to the those of single-skin cladding.

INSTALLATION OF VERTICAL CLADDING WITHOUT SPACER

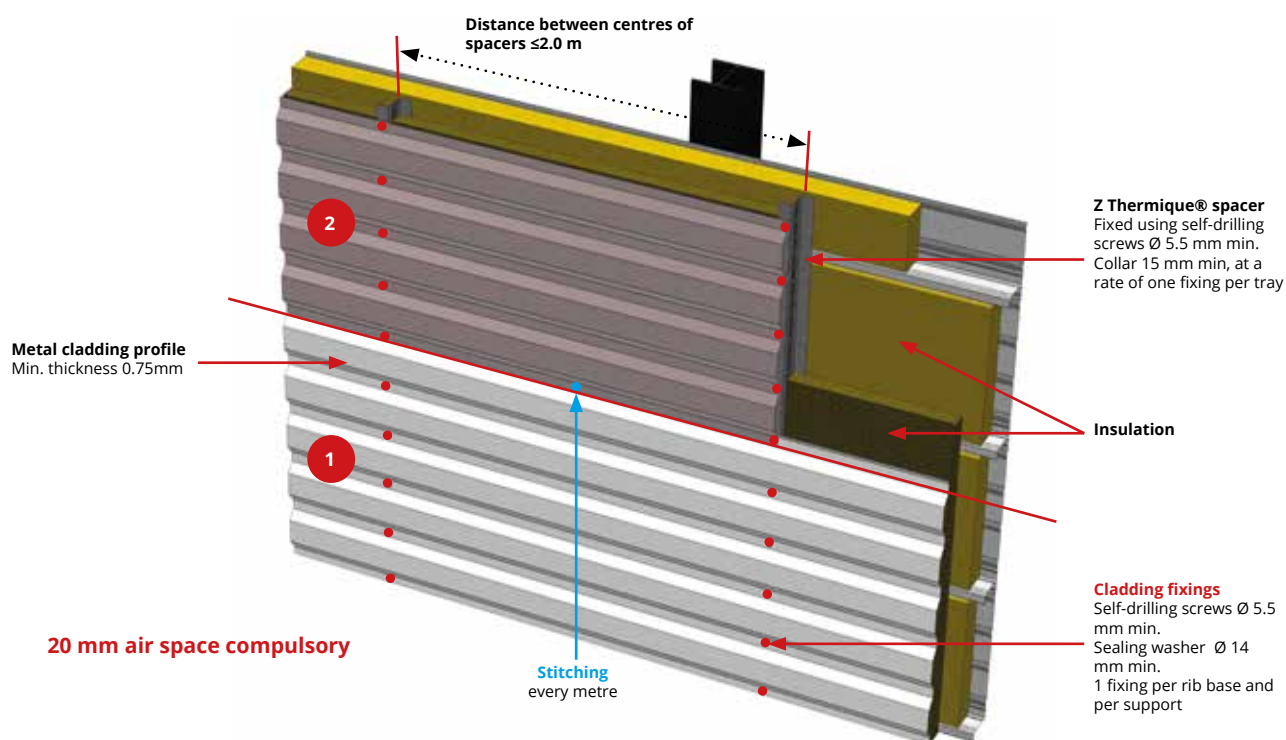


INSTALLATION OF VERTICAL CLADDING WITH SPACERS

Spacers are installed if the overall insulation thickness is greater than the depth of the tray. The Z Thermique® spacer prevents the insulation from being crushed. To be effective however, the insulation has to be attached on its perforated part (see below)

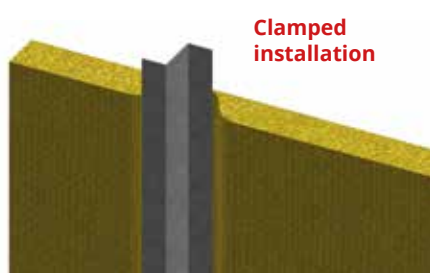


INSTALLATION OF HORIZONTAL CLADDING WITH SPACERS

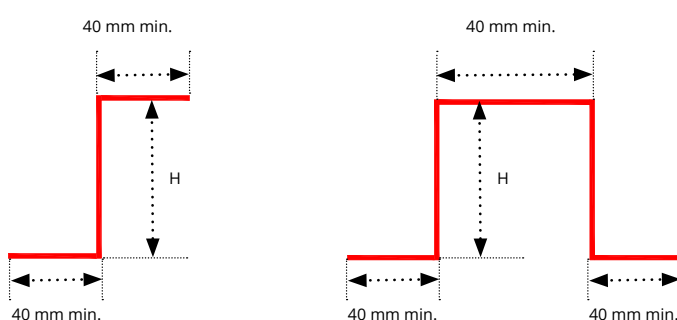


INSTALLING INSULATION

Insulation can either be clamped by the spacer or between spacers. If using Z Thermique®, clamping is not recommended to ensure optimum performance of the product.



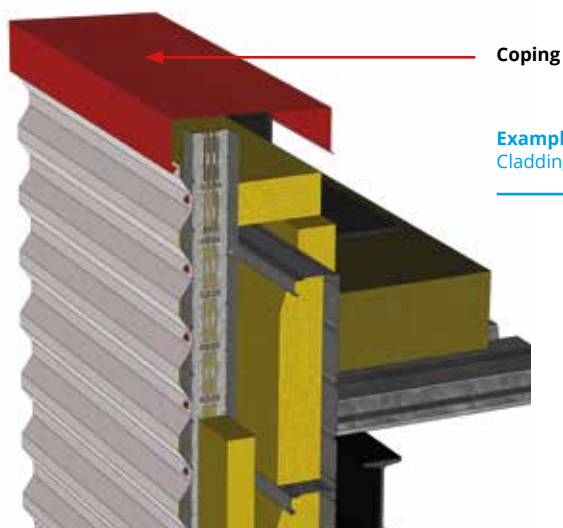
SPACER DETAIL



The nominal thickness of the spacers must be 1.5 mm minimum

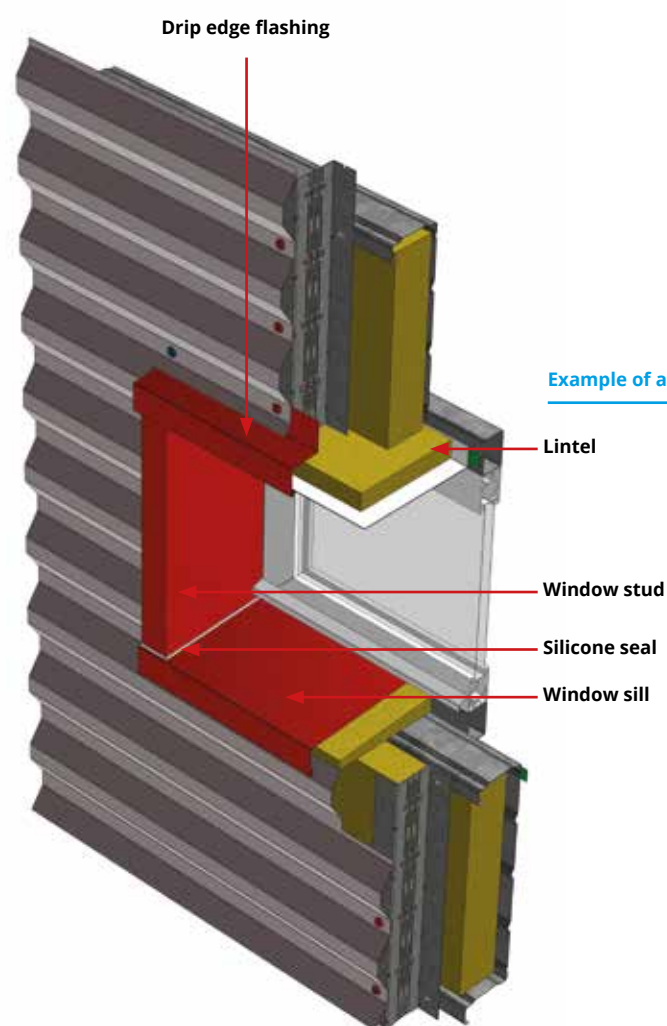
MANAGING SPECIFIC POINTS

NOTE: THESE ARE JUST EXAMPLES OF SOME REALISATIONS.



Coping

Example of managing a parapet:
Cladding/waterproof roofing connection



Drip edge flashing

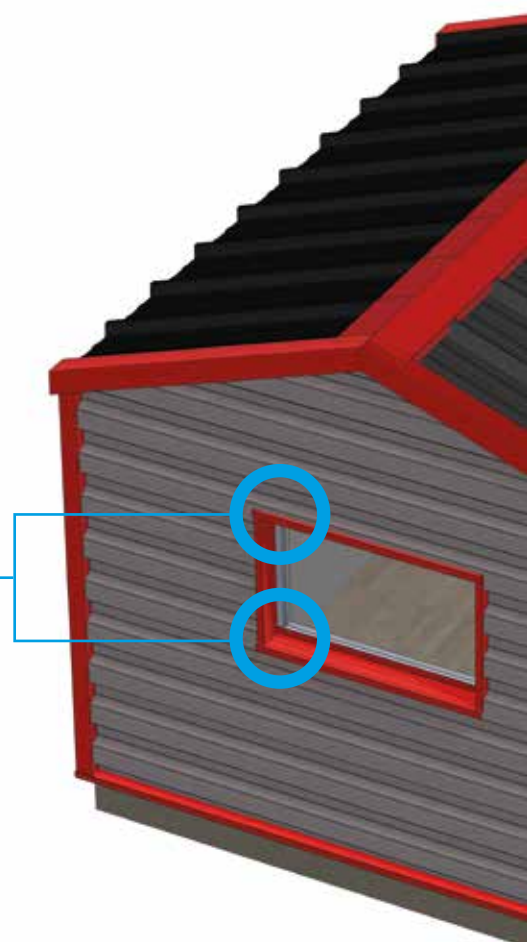
Example of a lintel and sill detail

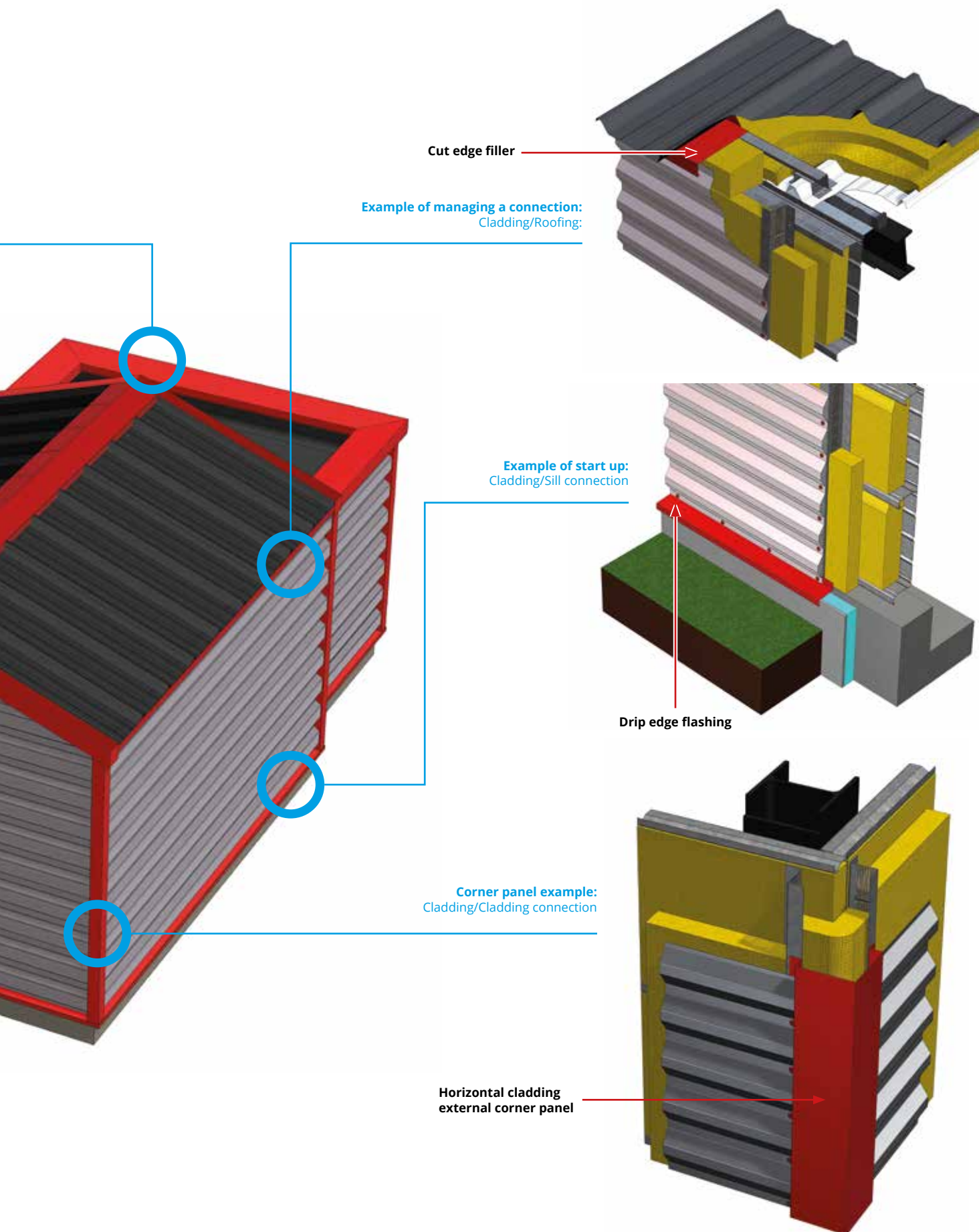
Lintel

Window stud

Silicone seal

Window sill

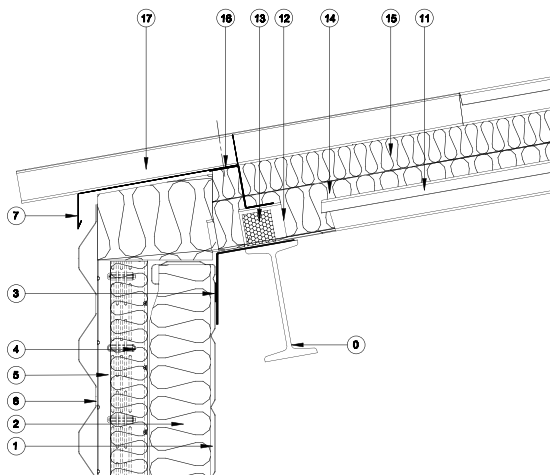




MANAGING SPECIFIC POINTS

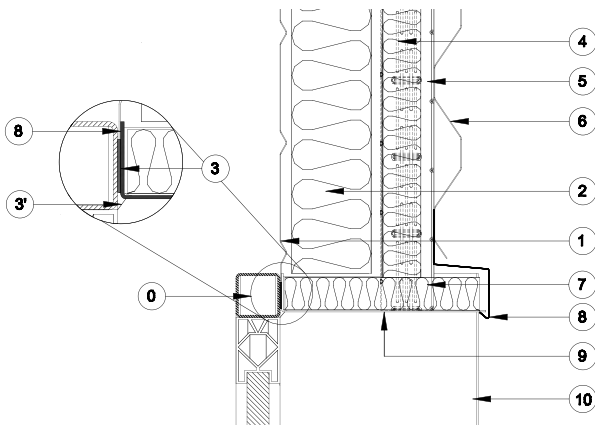
This part sets out the various preceding connections in 2D. **Note:** These are just examples of some realisations.

DOUBLE-SKIN CLADDING/DOUBLE-SKIN ROOFING CONNECTION



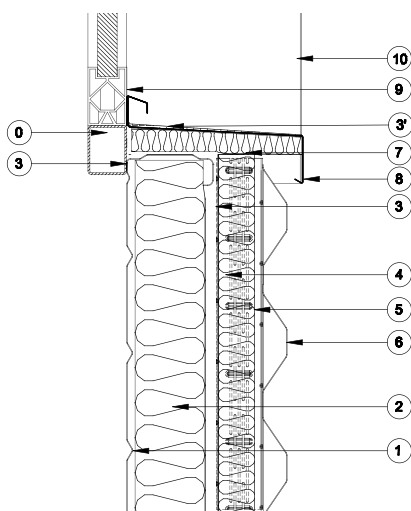
- 0 - Structure
- 1 - Tempo tray**
- 2 - Insulation in the tray
- 3 - Gasket
- 4 - Flexible insulation between spacers
- 5 - Z Thermique® Spacer**
- 6 - Facadéo, Sinus or Cascadéo profile**
- 7 - Cut edge filler**
- 11 - Covéo or Sinus profile**
- 12 - Metal spacer**
- 13 - Foam filler under profile 11
- 14 - Insulation unrolled on profile 11
- 15 - Flexible insulation unrolled on insulation 14 and dummy purlin
- 16 - Folded dummy purlin**
- 17 - Covéo or Sinus profile**

SILL/CLADDING CONNECTION



- 0 - Structure
- 1 - Tempo tray**
- 2 - Insulation in the tray
- 3 - Gasket
- 3' - Silicone seal
- 4 - Flexible insulation between spacers
- 5 - Z Thermique® Spacer**
- 6 - Facadéo, Sinus or Cascadéo profile**
- 7 - Insulation unrolled on support
- 8 - Water discharge flap**
- 9 - Batten underside**
- 10 - Window stud**

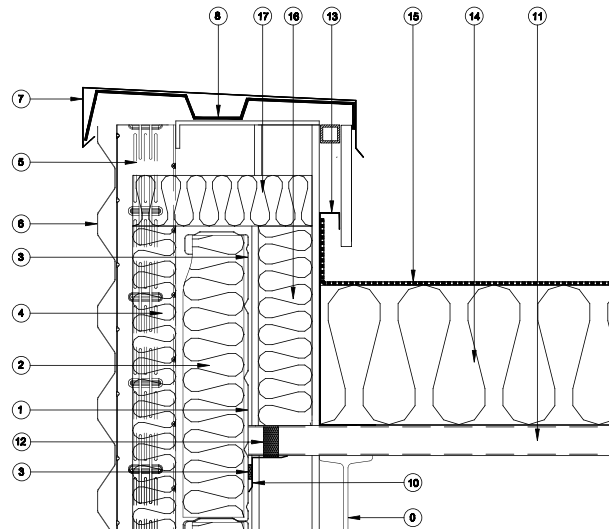
WINDOW SILL/CLADDING CONNECTION



- 0 - Structure
- 1 - Tempo tray**
- 2 - Insulation in the tray
- 3 - Gasket
- 3' - Silicone seal
- 4 - Flexible insulation between spacers
- 5 - Z Thermique® Spacer**
- 6 - Facadéo, Sinus or Cascadéo profile**
- 7 - Insulation unrolled on support
- 8 - Drip edge in support**
- 9 - Window
- 10 - Window stud**

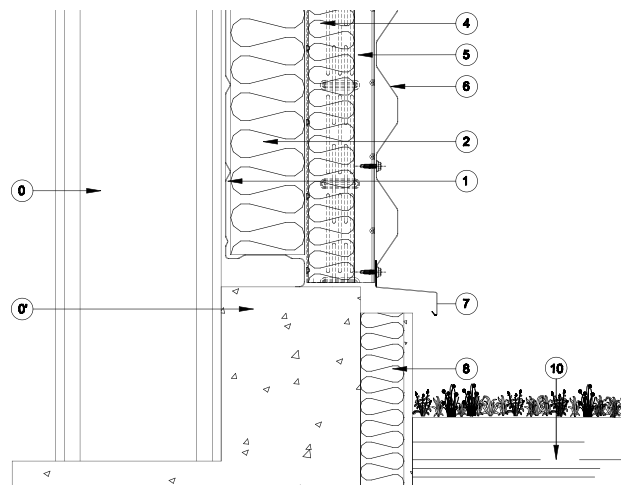
This part sets out the various preceding connections in 2D. **Note:** These are just examples of some realisations.

DOUBLE-SKIN CLADDING/SUPPORT CONNECTION



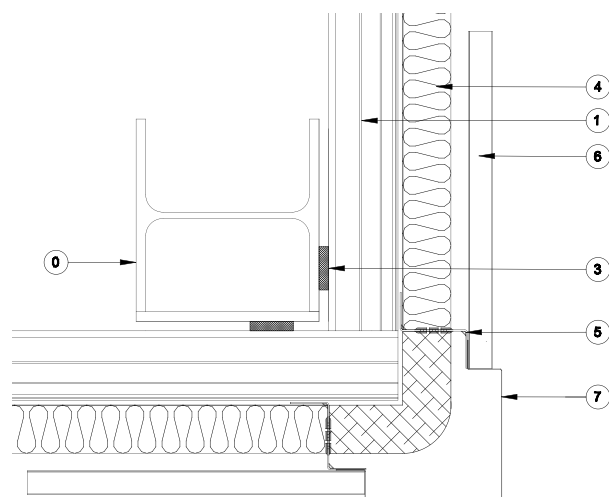
- 0 - Structure
- 1 - Tempo tray**
- 2 - Insulation in the tray
- 3 - Gasket
- 4 - Flexible insulation between spacers
- 5 - Z Thermique® Spacer**
- 6 - Facadéo, Sinus or Cascadéo profile**
- 7 - Coping**
- 8 - Coping support**
- 9 - Inner cladding**
- 10 - Folded curb**
- 11 - Altéo profile**
- 12 - Foam filler between 11 and 10
- 13 - Folded curb**
- 14 - Insulation unrolled on profile 11
- 15 - PVC or Bitumen waterproofing
- 16 & 17 - continuous insulation connecting the cladding to the waterproof roofing

SILL/DOUBLE-SKIN CLADDING CONNECTION



- 0 - Structure of the building
- 0' - Floor of the building
- 1 - Tempo tray**
- 2 - Insulation in the tray
- 4 - Flexible insulation between spacers
- 5 - Z Thermique® Spacer**
- 6 - Facadéo, Sinus or Cascadéo profile**
- 7 - Water discharge flap**
- 8 - Sill insulation and its mechanical protection
- 10 - Floor

CONNECTION DOUBLE-SKIN CLADDING/DOUBLE-SKIN CLADDING



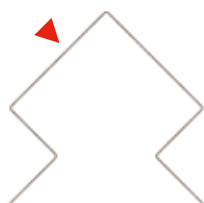
- 0 - Structure
- 1 - Tempo tray**
- 2 - Insulation in the tray
- 3 - Gasket
- 4 - Flexible insulation between spacers
- 5 - Z Thermique® Spacer**
- 6 - Facadéo, Sinus or Cascadéo profile**
- 7 - External corner panel horizontal cladding**

CLADDING FLASHING

Standard thickness 0.75 mm pre-painted 25 or 35 μm , μm , lengths 2100, 3000 or 4000 mm

External corner panel horizontal cladding

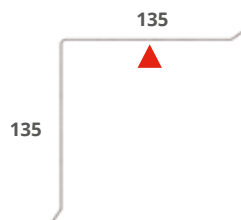
Item code: PLIASBH



Angles and dimensions to be specified

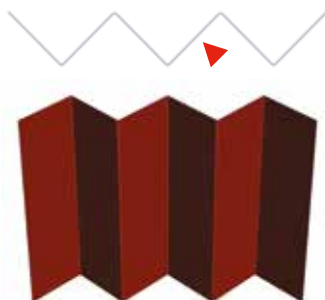
Internal corner panel vertical cladding

Item code: PLIAR



Internal corner panel horizontal cladding

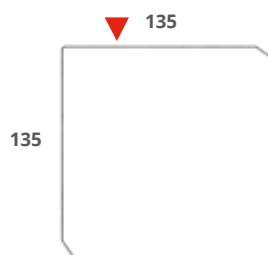
Item code: PLIARBH



Angles and dimensions to be specified

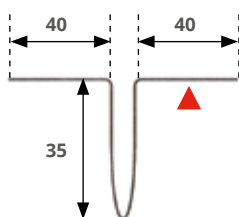
External corner panel vertical cladding

Item code: PLIASBV



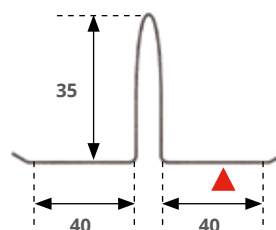
Pointer

Item code: PLIAIG



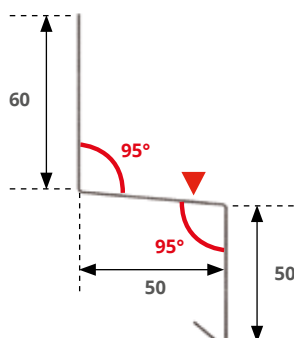
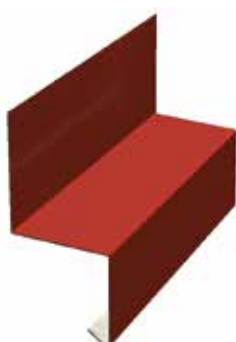
Inverted pointer

Item code: PLIAIGI



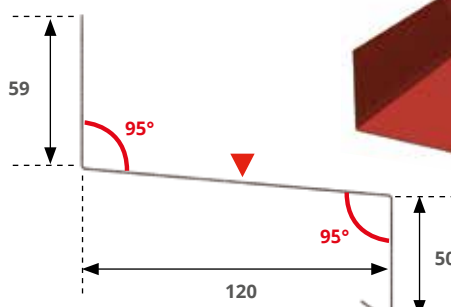
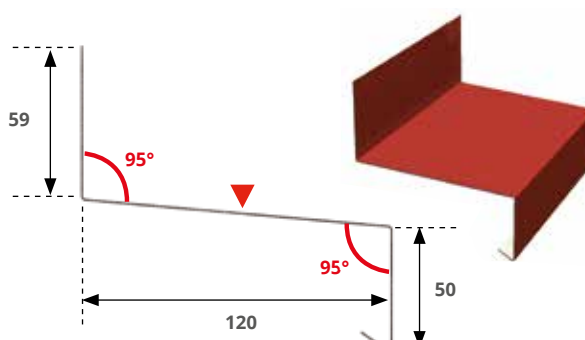
Drip edge flashing 1

Item code: PLIBRE1



Drip edge flashing 2

Item code: PLIBRE2

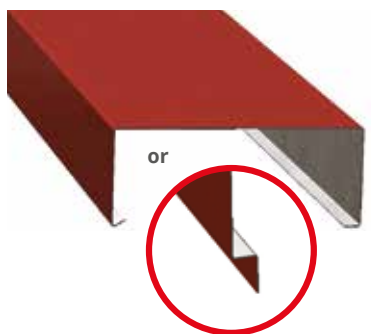


ROOF FLASHINGS

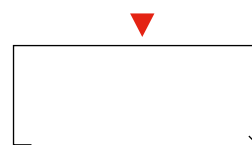
Standard thickness 0.75 mm pre-painted 25 or 35 μm , μm , lengths 2100, 3000 or 4000 mm

Clip-on coping

Item code: PLICOUVCLIPS

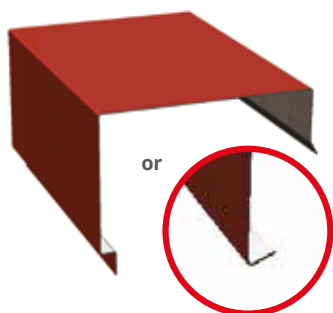


Angles and dimensions to be specified

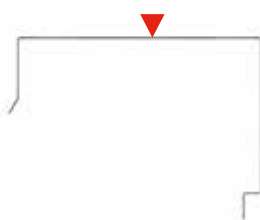


Standard coping

Item code: PLICOUV



Angles and dimensions to be specified



Butt strap

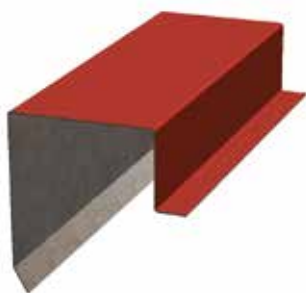
Item code: PLIECL



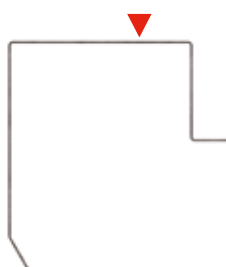
Internal or external positioning

Window stud cover

Item code: PLIJAMB



Angles and dimensions to be specified

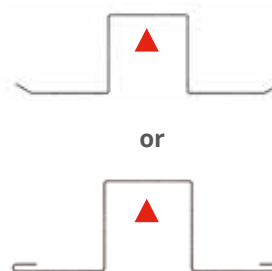


Shadow gap

Item code: PLIJC



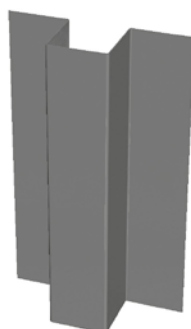
Angles and dimensions to be specified



Omega

Item code: PLIOMEGA

Thickness 1.5 mm galvanised



Angles and dimensions to be specified



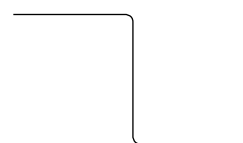
Spacer

Item code: PLIECART

Thickness 1.5 mm galvanised



Angles and dimensions to be specified



BACACIER®

AT YOUR SERVICE



www.bacacier.com

*Discover all our products
and services online*



open@bacacier.com

*Comitted to respond
within 48 hours*