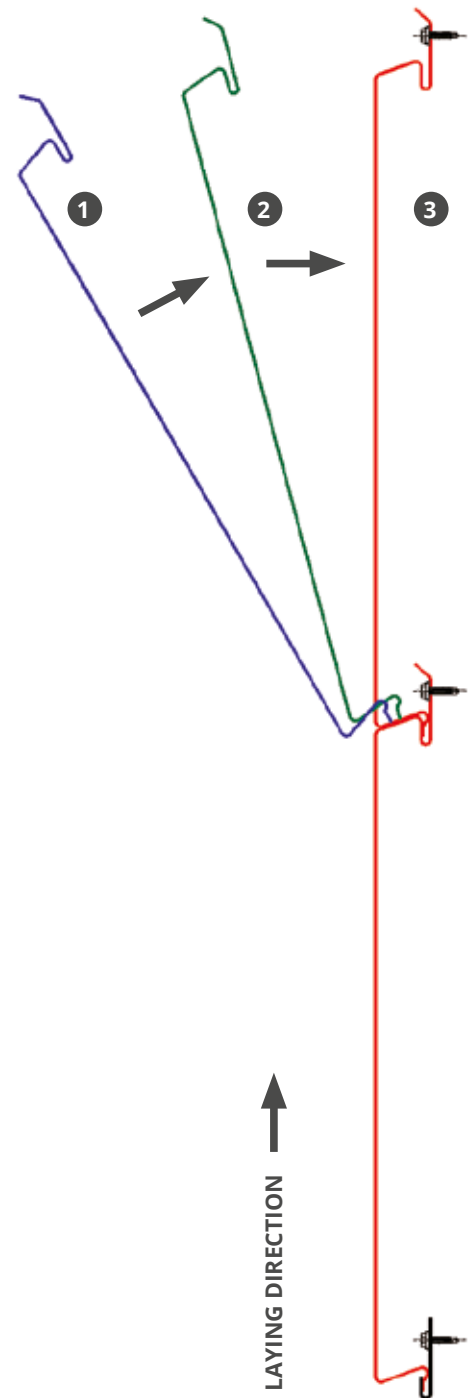
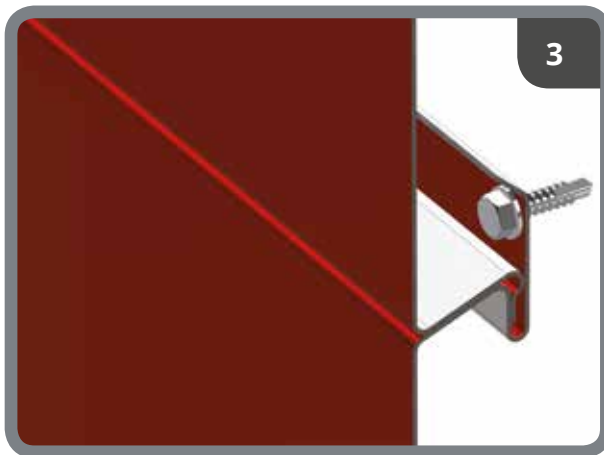
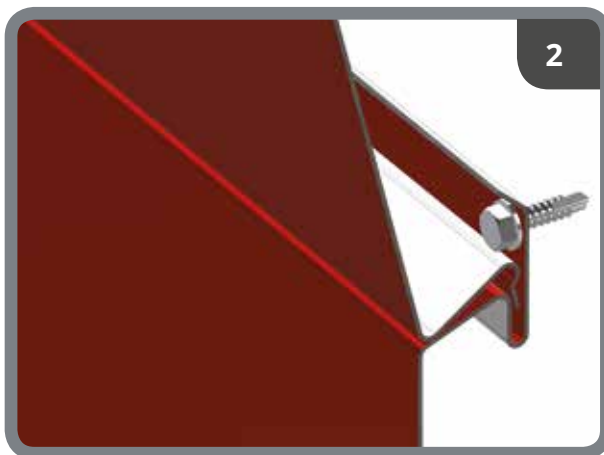
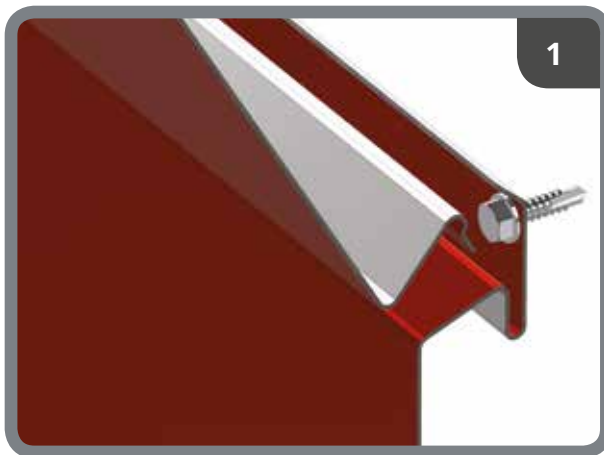


INTERLOCKING SYSTEM



INSTALLING THE CLADÉO PANEL



One fixing per panel and per support

Stainless steel hex head self-drilling screw
with flange (6 x 8 mm sections)
Ø 5.5 X 22

Panel performances

The different geometries and mechanical performances of profiles in the Cladéo range are specified in the Bacacier technical data sheets that we invite you to consult online at www.bacacier.com



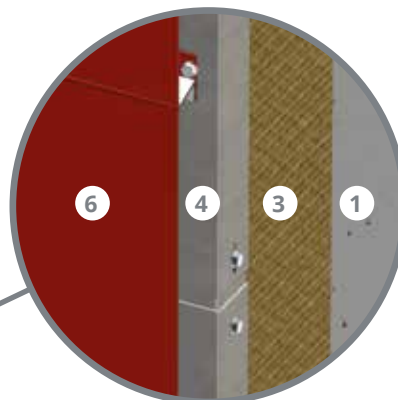
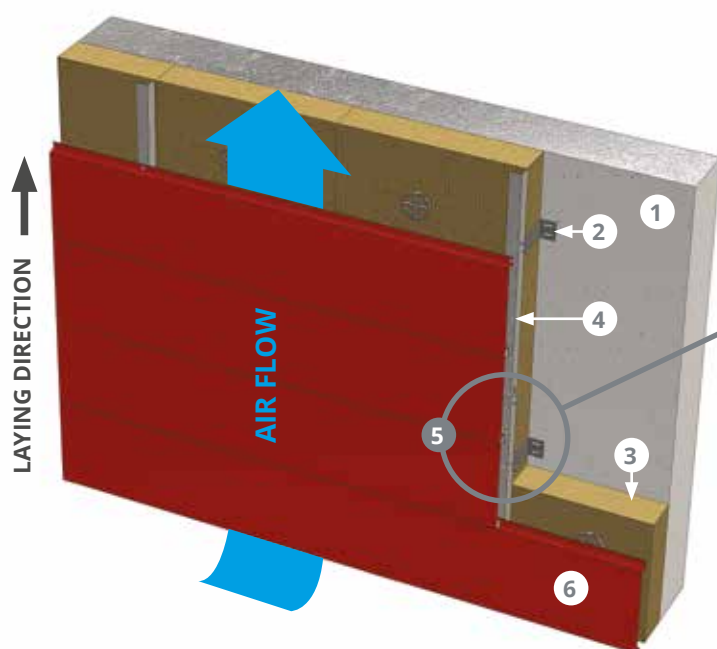
HORIZONTAL ASSEMBLY

- ▶ The **planarity of the sub-frame is essential** to obtain a perfect finish on the façade
- ▶ Be careful **not to bend the panels** when fixing

- ▶ When installing insulation, Allow for **an air space of at least 20 mm** between the insulation and the Cladéo profile (ventilation)
- ▶ To ensure that the whole structure is level, **make sure that first panels are leveled out.**
- ▶ **Note:** as the panels and accessories are from coils of different thicknesses and from different batches, the shades may vary slightly.

WALL INSTALLATION

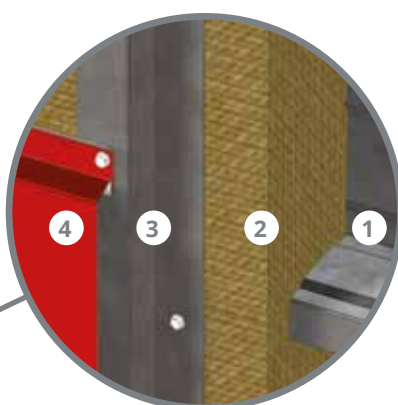
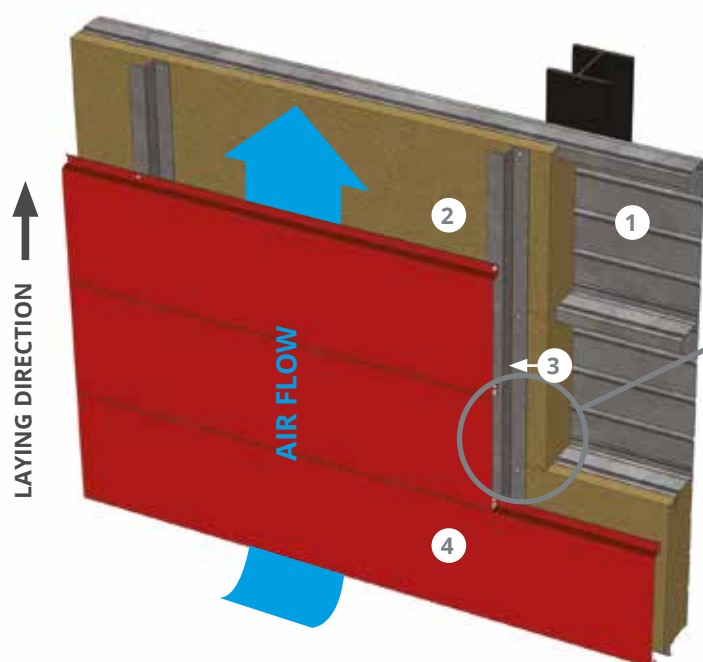
- ▶ When installing insulation, make sure to



EXAMPLE OF AN EXPANSION JOINT (5)

- 1 - GROUND WALL
- 2 - ANGLE BRACKET
- 3 - INSULATION (EXAMPLE)
- 4 - SUB-FRAME (Z, L OR Ω)
- 5 - EXPANSION JOINT
- 6 - CLADÉO PANEL

INSTALLATION ON TRAYS



EXAMPLE OF THE FIXING PROCESS

- 1 - LINER TRAY
- 2 - INSULATION (EXAMPLE)
- 3 - SUB-FRAME (HERE FOLDED Z)
- 4 - CLADÉO PANEL

VERTICAL ASSEMBLY

- The **planarity of the sub-frame is essential** to obtain a perfect finish on the façade
- Be careful **not to bend the profiles** when attaching fixing

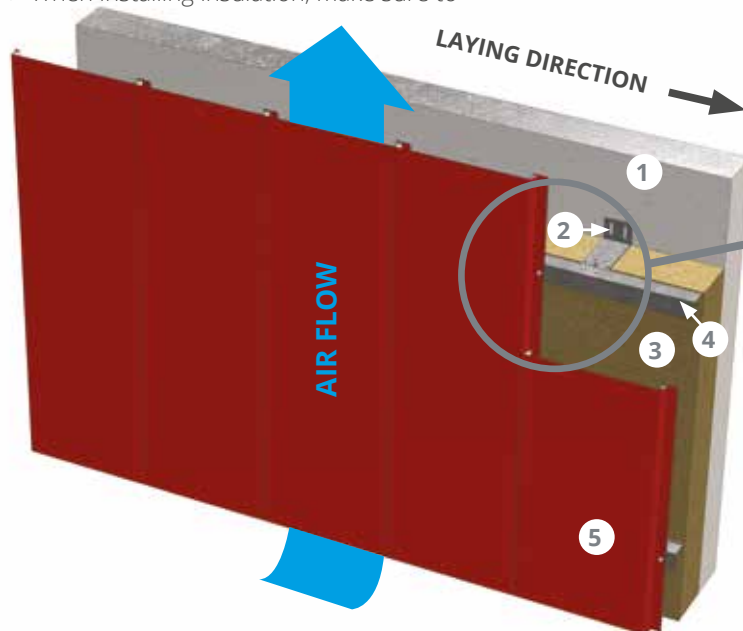
allow for **an air space of at least 20 mm** between the insulation and the Cladéo panel (ventilation)

► To ensure that the whole structure is orthogonal, **make sure that the first panels are plumb fitted.**

► **Note:** as the panels and accessories are from coils of different thicknesses and from different batches, the shades may vary slightly.

INSTALLING ON A WALL

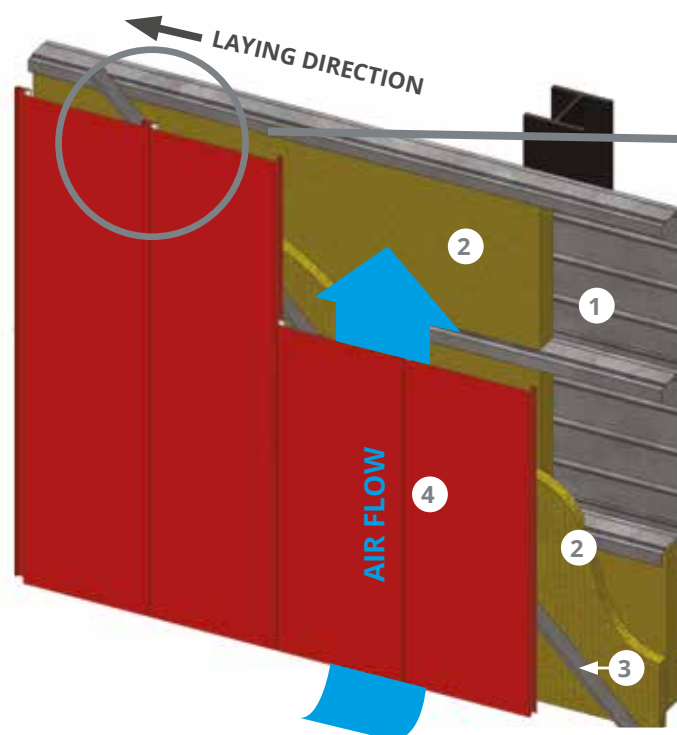
- When installing insulation, make sure to



EXAMPLE OF THE FIXING PROCESS

- 1 - BASE WALL
- 2 - ANGLE BRACKET
- 3 - INSULATION (EXAMPLE)
- 4 - SUB-FRAME (Z, L OR Ω)
- 5 - CLADÉO PANEL

INSTALLING ON TRAYS



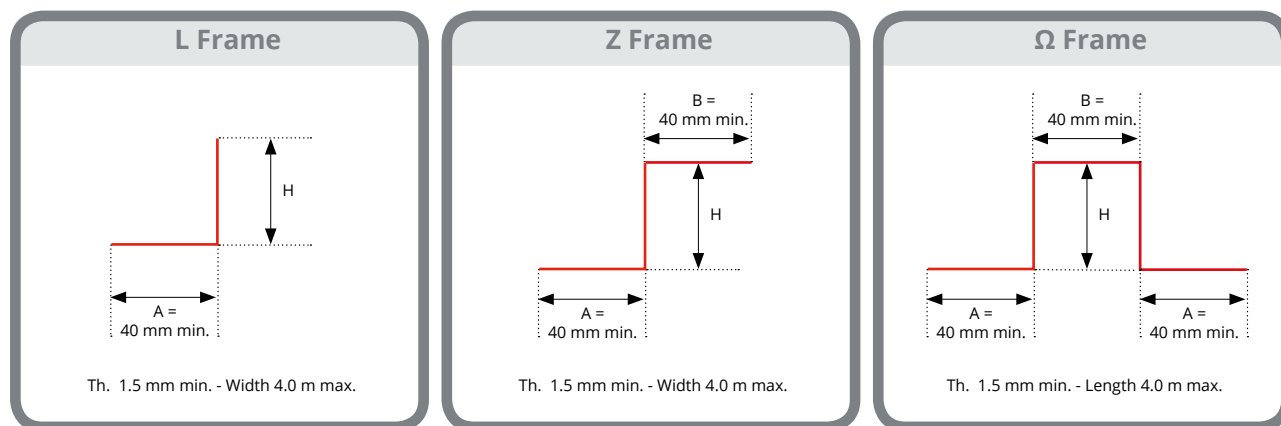
EXAMPLE OF THE FIXING PROCESS

- 1 - LINER TRAY
- 2 - INSULATION (EXAMPLE)
- 3 - SUB-FRAME (HERE FOLDED Z)
- 4 - CLADÉO PROFILE

SUB FRAME ELEMENTS

SHAPE

The sub frame elements, namely horizontal bars or vertical uprights are metal elements or wooden rafters. BACACIER can provide the following metal elements:



Values A, H and B as well as the thickness must be provided for all quotes. The suitability of the chosen thickness can be verified by a calculation upon request.

INSTALLATION

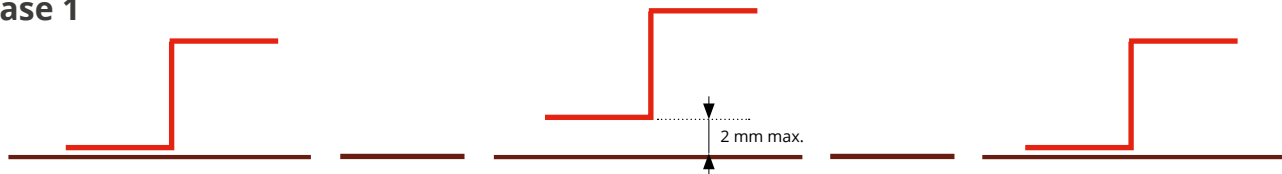
Installation of the sub frame elements should be carried out:

- ▶ On clamps according to the rules contained in CTSB specifications no. 3194 (metal frame) or 3316 V2 (timber frame), for fixing to a wall.
- ▶ On lips in the case of fitting double-skin metal cladding.

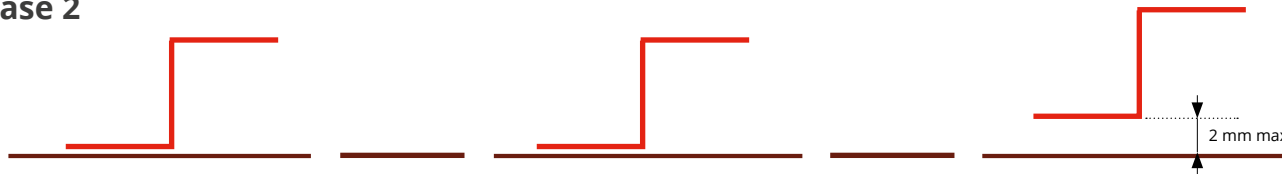
PLANARITY OF THE SUB-FRAME

Irrespective of the element used, the sub frame must observe a maximum admissible **non planarity of 2 mm on three supports**.

Case 1



Case 2



INSTALLING THE SUB FRAME



Two fixings per ETI clamp and per sub frame.

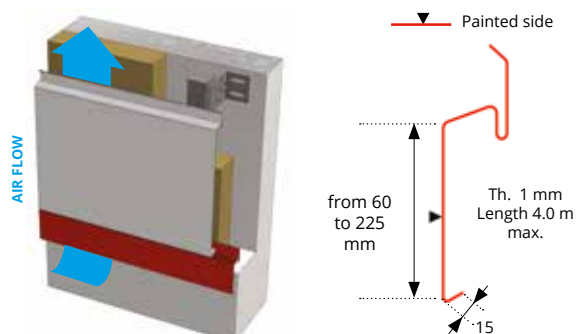
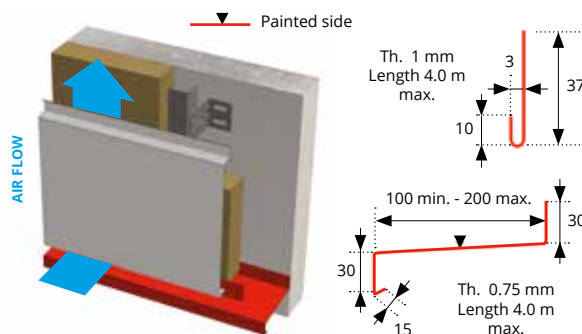
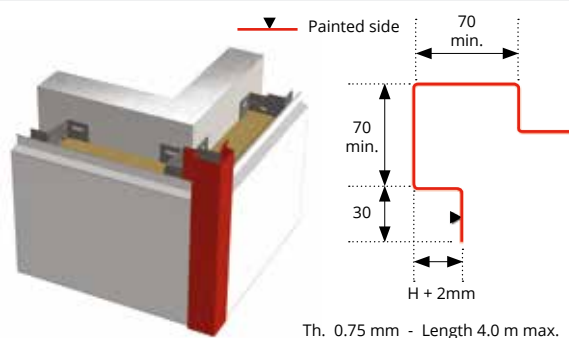
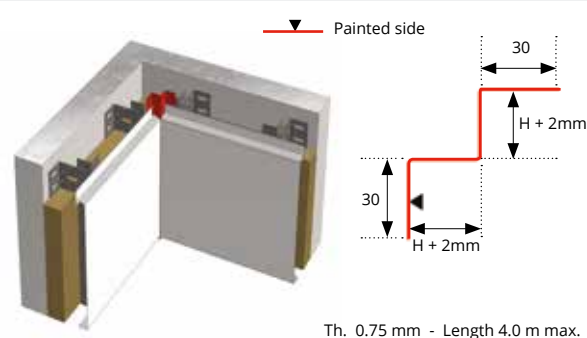
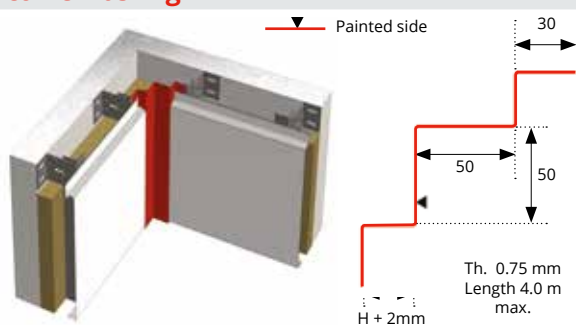
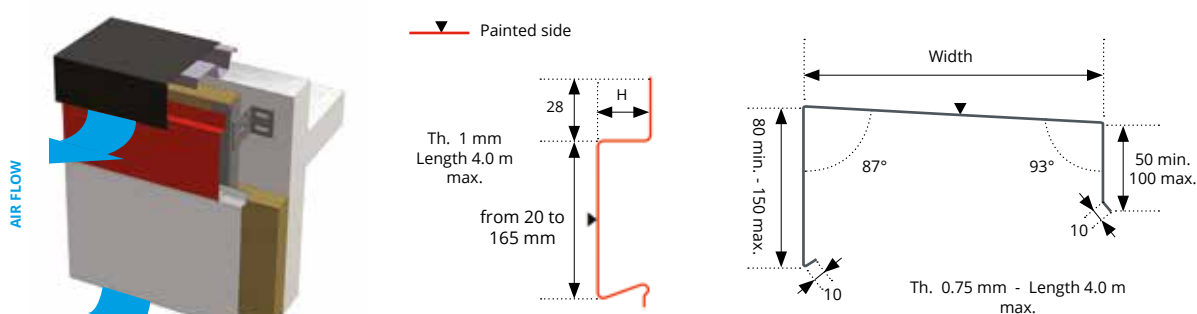
Stainless steel hex head self-drilling screw with flange (6 x 8 mm sections)
 Ø 5.5 X 22

Note: Air space

The dimensions of the sub frame and the insulation must allow for an air space of at least 20 mm between the insulation and the inner face of the siding.

IRREGULAR POINTS HORIZONTAL INSTALLATION

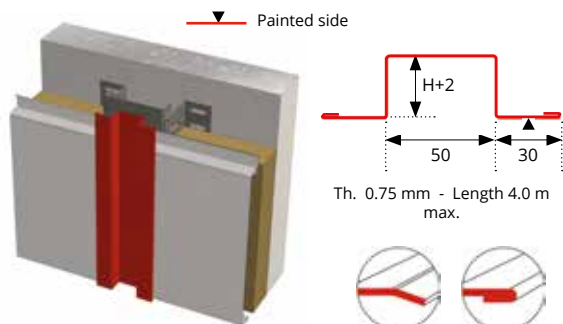
H corresponds to the height of the given Cladéo panel. This value is expressed in mm

Bottom of cladding/**Bottom of cladding panel**Bottom of cladding/**Bottom of cladding and drip edge**External corner panel/**Standard external corner flashing**Internal corner panel/**W shaped internal corner flashing**Internal corner panel/**Accordeon shaped internal corner flashing**Top of cladding/**horizontal parapet trim and coping**

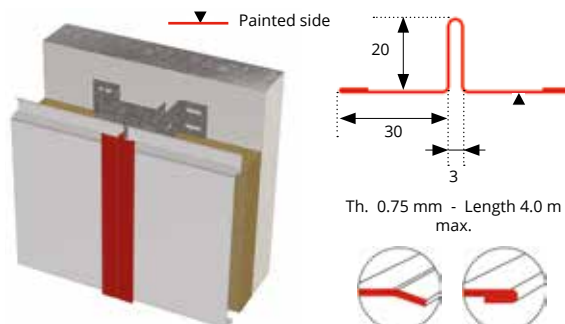
End flashings angled (length 10 mm) or collapsed (length 8 mm)

H corresponds to the height of the given Cladéo panel. This value is expressed in mm

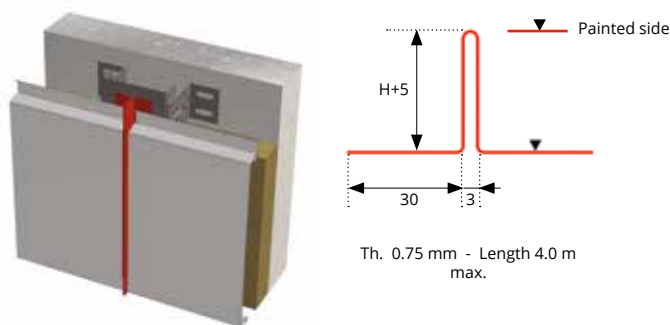
Junction between panels/ with shadow gap



Junction between panels/ with inverted pointer

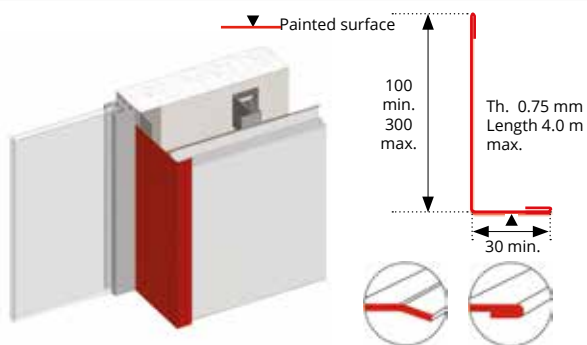


Junction between panels/ with pointer

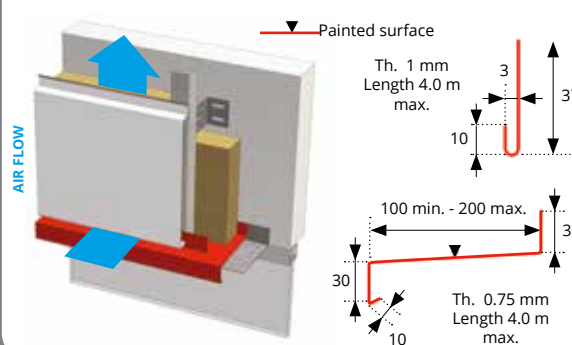


Note: The panels are voluntarily limited to 4 m in this configuration for aesthetic reasons

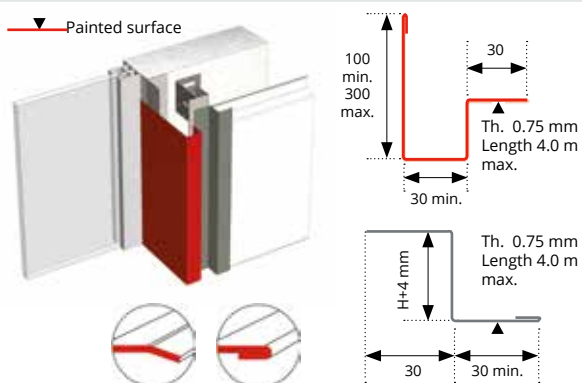
Openings/Single jamb



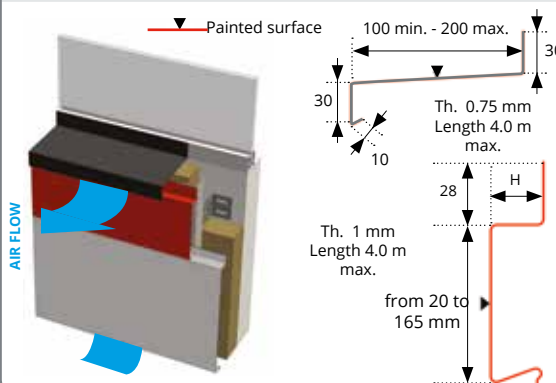
Openings/Horizontal batten



Openings/Shadow gap jamb



Openings/Horizontal edge support

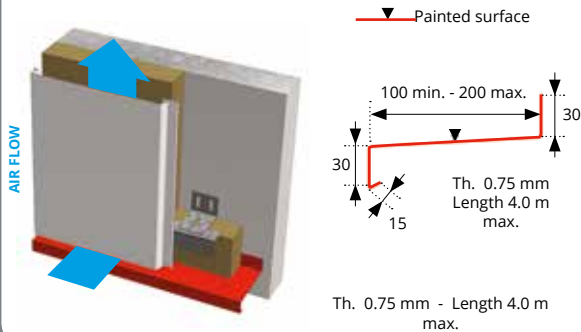


End flashings angled (length 10 mm) or flap (length 8 mm)

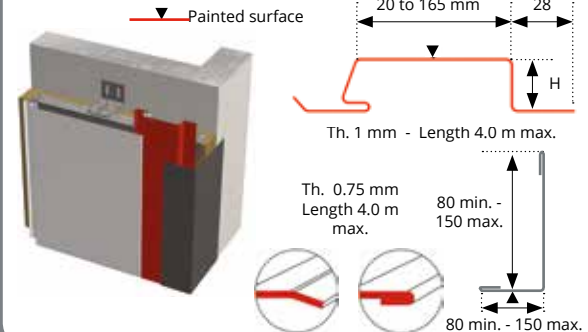
IRREGULAR POINTS VERTICAL INSTALLATION

H corresponds to the height of the given Cladéo profile. This value is expressed in mm

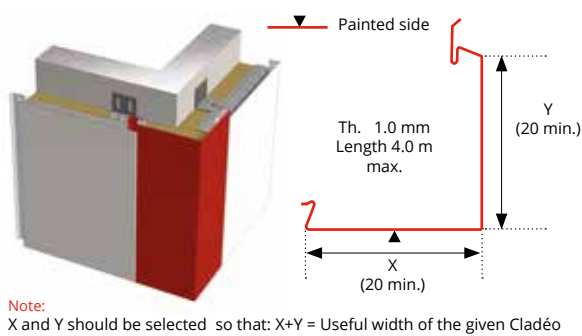
Bottom of cladding with drip edge



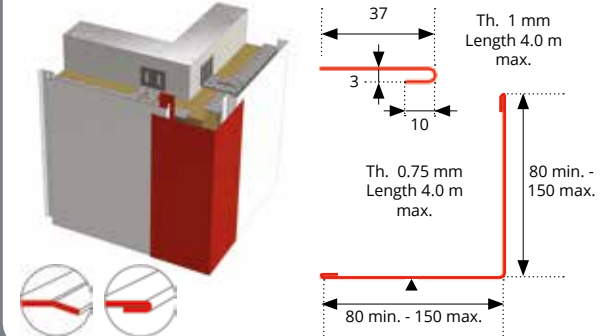
Junction at existing wall



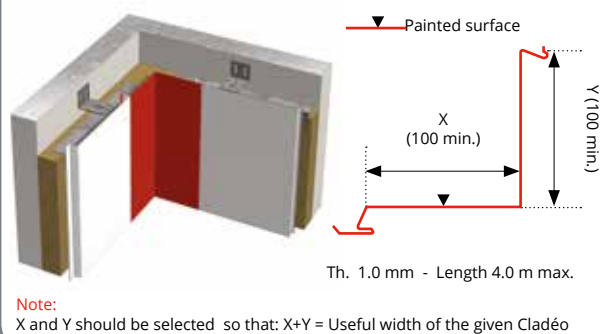
External corner panels/folded panel type



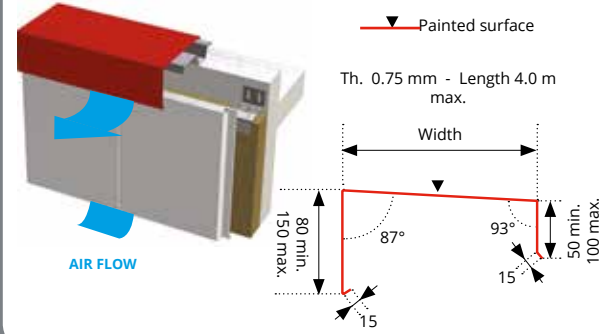
External corner panels/hood type



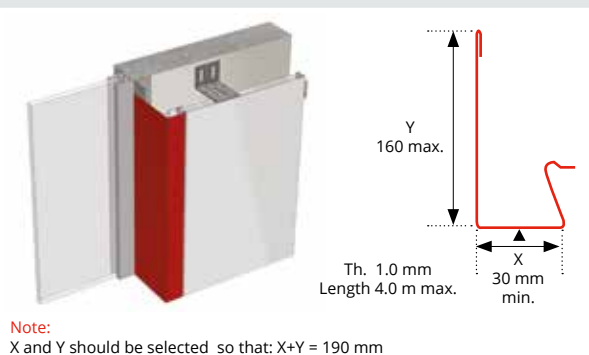
Internal corner panel/folded panel type



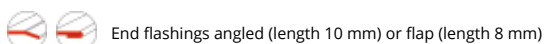
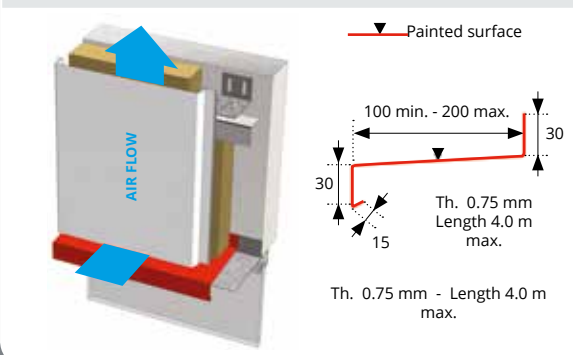
Top of cladding/Parapet coping



Openings/Jamb in clips



Openings/Edge support and vertical trimmer





BACACIER®

AT YOUR SERVICE



www.bacacier.com

*Discover all our products
and services online*



open@bacacier.com

*Comitted to respond
within 48 hours*